

Mulches



Peat Moss



Retail Soils

We stock truckloads so you don't have to!

Please remember to recycle.

ADEL, IA 1-888-693-1473 | JOLIET, IL 1-800-413-0924 | KANSAS CITY, KS 1-888-713-9009 | BELLEVILLE, MI 1-800-883-2234 | JENISON, MI 1-800-883-4234 | KALAMAZOO, MI 1-800-883-7234 | LOUISVILLE, KY 1-866-940-3779  
MINNEAPOLIS, MN 1-800-798-2891 | LANCASTER, NY 1-800-883-3234 | BURTON, OH 1-800-883-0234 | PORTLAND, OH 1-800-843-2830 | XENIA, OH 1-800-883-5234 | HARMONY, PA 1-800-883-8234 | BROOKFIELD, WI 1-800-269-8816

# KEEP YOUR COOL!

## Shade Paint

Mardankro  
ReduSol



ReduSol liquid greenhouse shading agent is the lowest cost shade paint we sell per 1000 square feet of application!

Continental  
Kool Ray  
Liquid Shade



## Shade Cloth



Green.tek

### Knitted Shade Cloth

Available in stock sizes or cut to size, Shade Rite Knitted Shade Cloth from Green-Tek offers protection for UV and heat sensitive plants. It's lightweight, easy to install, and comes in a range of shade percentages from 30% to 90%.



DeWitt

### Woven Shade Cloth

Protect your crop with woven polypropylene shade cloth from DeWitt. It is lightweight, easy to work with, and comes in standard lengths or can be custom ordered.

Prepaid freight on \$450 or more order of DeWitt woven shade cloth.

**10% OFF ALL SHADE CLOTH ORDERS\***

\*Discount expires April 30, 2009

## Print It, Tag It, Sell It!

GC-1 Stand Alone Garden Center Tag & Label Printing System. This versatile printer lets you print your own tags for pots, trays, baskets, and signage. Print description tags, barcodes, and more. This is a must-have for any retail operation. Printers are programmed and sent directly from the manufacturer.



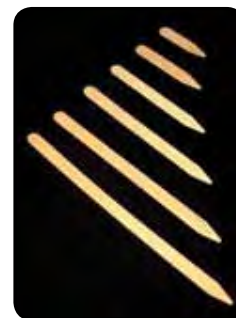
**RETAIL SERVICE COMPANY**  
STICK WITH US!

ITEM #	DESCRIPTION	COUNT	UM	PRICE
16-0400A	GC-1 Deluxe Printer w/ software			\$949.00
16-0401	GC-1 Stand Alone Printer w/ large keypad			\$899.00
16-0425A	3.3"x244' black transfer ribbon		each	\$11.49
16-0410	1"x7" 2-across wrap-around white tag	1400 labels/roll	roll	\$51.72
16-0411	1"x10" wrap-around tag w/ 2" tear off	1000 labels/roll	roll	\$51.72
16-0415	2"x1" waterproof white vinyl label	1380 labels/roll	roll	\$26.99
16-0405A	Retail Service 3/4"x5" 4-across white pot stake	2000 labels/roll	roll	\$67.89
16-0405	Retail Service 3/4" x 5" 3-across white pot stake	1500 labels/roll	roll	\$50.92

## 10% OFF PLANT LABELS

### Choose Your Label!

No matter what crop you're growing or what container you're using, we have the plant labels you need. Choose from plastic or wood, any color, any size. These are our most popular items, but ask your sales rep about many other choices. Offer expires April 30, 2009.



ITEM #	DESCRIPTION	COUNT	UM	SALE PRICE
16-0230	Pylon 4" white label	1000	box	\$40.77
16-0232	Pylon 5" white label	1000	box	\$47.66
16-0234	Pylon 6" white label	1000	box	\$58.38
16-0236	Pylon 8" white label	500	box	\$45.00
16-0031	Dayton 10" wooden pot label	500	box	\$28.89
16-0033	Dayton 12" wooden pot label	500	box	\$37.46
16-0040	Dayton 10"x7/8" Garden Marker 3160 Plain	250	box	\$24.08
16-0045	Dayton 12"x1/8" Garden Marker 3180 Plain	250	box	\$31.57

## Talk About a Rebate Offer!

Save on these powerful performers from Motorola.

**\$100 REBATE** on every six CLS Series two-way radios.

**\$200 REBATE** on every six DTR410 two-way radios.

**\$200 REBATE** on every six RDX Series two-way radios.

Call us or visit [www.bfgsupply.com](http://www.bfgsupply.com) to obtain the rebate form and directions on how to claim your rebate.



**SAVE 15%\***

## KNOW YOUR NUMBERS



Effective nutrient management starts with soil and water quality. We're your source for all the soil and irrigation water testing equipment you need to grow a healthy and profitable crop. Talk to your BFG sales rep about these popular Hanna Instrument meters and all of the supplies that will help you stay on top of your numbers. \*Offer expires April 30, 2009.

ITEM #	DESCRIPTION	UM	SALE PRICE
34-0802A	Hanna 9813 Waterproof pH/EC/TDS Meter	Each	\$187.00
34-0809	Hanna 98127 Waterproof pH Tester	Each	\$82.00
34-0816	Hanna 98130 Combo pH/EC/TDS Temperature Meter (w/ high range EC)	Each	\$148.00

## Boost Your Spring Sales!



Al's Flower Pouches make an almost irresistible impulse purchase. Fill it up, plant it up, and watch your sales grow!



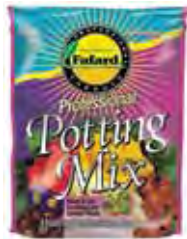
ITEM #	DESCRIPTION	COUNT	UM	PRICE
05-0040A	10 Hole	250	Each	\$0.73
05-0040B	1 row of 5 holes	250	Each	\$0.73
05-0040C	Mini Flower Pouch 6 holes	250	Each	\$0.70
05-0040D	Pouch Filler (Direct Ship)	1	Each	\$2,292.74



# Fafard® Southern Retail Soils

## Professional Potting Mix

Indoor and outdoor potting and planting  
This lightweight formula has been pH adjusted and combines Canadian sphagnum peat moss, processed pine bark, vermiculite and perlite for excellent drainage and great results.



ITEM #	DESCRIPTION	SIZE	QTY/PALLET
12-0655AA	Professional Potting Mix	10 qt.	200
12-0785DD	Professional Potting Mix	20 qt.	112
12-0655BB	Professional Potting Mix	40 qt.	80
12-0655CC	Professional Potting Mix	64 qt.	48

## Complete Planting Mix

Annuals • Perennials • Roses • Trees • Shrubs • Flower beds • Vegetables  
Enhancement with controlled release fertilizer (CRF) and water holding crystals make this truly a complete planting mix.



ITEM #	DESCRIPTION	SIZE	QTY/PALLET
12-0802A	Complete Planting Mix	32 qt.	80

## Complete Potting Soil

Foliage plants • Flowering plants • Tropical plants • House plants  
Enhanced with a controlled release fertilizer (CRF) to feed plants for up to 6 months.



ITEM #	DESCRIPTION	SIZE	QTY/PALLET
12-0804A	Complete Potting Soil	8 qt.	200
12-0763A	Complete Potting Soil	16 qt.	126
12-0798A	Complete Potting Soil	32 qt.	80

## Complete Container

Hanging baskets • Outdoor planters • Window boxes • Patio pots  
This mix is specifically formulated to drain rapidly, while the water-holding polymer crystals keep enough water in reserve to nurture plants through dry, windy days. It also has a controlled release fertilizer (CRF) that will feed plants for three to four months.



ITEM #	DESCRIPTION	SIZE	QTY/PALLET
12-0803A	Complete Container	32 qt.	80

## Clay Buster/Organic Soil Conditioner

ITEM #	DESCRIPTION	SIZE	QTY/PALLET
12-0778AA	Clay Buster w/ Plant Food	1 cf.	90
12-0790	Organic Soil Conditioner	40 qt.	80



Some items are not stocked in all BFG warehouses, but are available with the appropriate lead time.

## Point-of-Purchase Materials

Fafard provides all the tools you need to maximize sales and encourage repeat customers. They start with consistent, high quality products, then support them at the retail level with FREE point-of-purchase materials like banners, pallet stands, and signs. A list of helpful tips, instructions on Fafard's bags, and FREE informational signs are also available.

### Banners

- Weather resistant
- Heavy duty
- Poly Size: 26" x 60"



Banner

### Pallet Signs

- Give suggested uses
- Help your customer make a decision
- Full color
- Weather resistant
- Size: 11" x 7" for use with pallet stands or use on fences, walls, shelves



Pallet Sign

### Pallet Stands

- Galvanized pallet stands
- Height: 42" with tilt holder (11"x7" sign)
- Perfect to stand in the garden center or in front of the pallet



Pallet Stand with Pallet Sign

Contact your BFG sales representative to coordinate all of your point-of-purchase material needs.

# Sunshine® Retail Products

## Container Potting Mix

Use for bedding plants, window box containers, and hanging baskets. Specially formulated with a time release fertilizer for long term plant growth and a water holding copolymer to ensure improved water availability to plants.



ITEM #	DESCRIPTION	SIZE	QTY/PALLET
12-5409AA	Container Potting Mix	16 qt.	120
12-5410A	Container Potting Mix	1.5 cf.	75
12-5415A	Container Potting Mix	2.5 cf.	45



## All-Purpose Planting Mix

Use for transplanting, container planting, and indoor planting.



ITEM #	DESCRIPTION	SIZE	QTY/PALLET
12-5409A	All-Purpose Planting Mix	16 qt.	120
12-5390A	All-Purpose Planting Mix	1.5 cf.	75
12-5380A	All-Purpose Planting Mix	2.5 cf.	45

## Professional Growing Mix

Use in container plantings or indoors for house plants. Features a time release fertilizer for gradual nutrient feeding.



ITEM #	DESCRIPTION	SIZE	QTY/PALLET
12-5409B	Professional Growing Mix	16 qt.	120
12-5440A	Professional Growing Mix	1.5 cf.	75
12-5445A	Professional Growing Mix	2.5 cf.	45

## Natural and Organic Planting Mix

Certified Naturally Grown. Popular peat-lite formula with organic wetting agent. Contains Canadian Sphagnum peat moss, perlite, dolomite lime, and an organic wetting agent.



ITEM #	DESCRIPTION	SIZE	QTY/PALLET
12-5479A	Natural and Organic Planting Mix	1.5 cf.	75
12-5408AA	Natural and Organic Planting Mix	2.5 cf.	45

# Michigan Peat Retail Products

## MICHIGAN PEAT COMPANY

### Garden Magic Topsoil

Ready to use out of the bag, this topsoil is a blend of dark reed sedge peat and sand. Uses include top dressing for lawns and gardens, patching bare spots in lawns, loosening heavy soils, and improving moisture retention in existing soils.



ITEM #	SIZES AVAILABLE	QTY/PALLET
12-6001GA	40 lbs.	60

### Garden Soil

Ideal for outdoor vegetable gardens, flower gardens, and ornamental beds, BACCTO Garden Soil provides a nutrient-rich blend of moist horticultural sphagnum peat moss and odor-free manure. As with all BACCTO products, it's ready to use right out of the bag.



ITEM #	SIZES AVAILABLE	QTY/PALLET
12-6001JA	1 cu. ft.	75

# Buckeye Resources Retail Products

## Nature's Richest Compost & Cow Manure

Natures Richest Compost and Manure is an odor free blend of natural organic reed sedge peat and composted manure. It provides a natural nutrient content, making it ideal for a wide range of plantings.

ITEM #	SIZES AVAILABLE	QTY/PALLET
12-3003AA	40 lbs.	60



## Red Mulch

The Look of Cypress® Mulch

- Made from 100% clean, dry, reclaimed lumber
  - Safe around children, pets and plants
  - Colored with pigments that are used for food contact
  - Will retain its color longer than conventional mulches
- Available in 2 cu. ft. bags and bulk shipments



ITEM #	SIZES AVAILABLE	QTY/PALLET
12-3002W	2 cu. ft.	60

## Black Sable® Hardwood Mulch

- Shredded
  - Ideal for windy and rainy areas
  - Has ability to mat and hold moisture
  - Insulates soil from heat and cold
  - Easy to spread and economical to use
- Available in 2 cu. ft. and 3 cu. ft. bags and bulk shipments



ITEM #	SIZES AVAILABLE	QTY/PALLET
12-3002R	2 cu. ft.	60

Some items are not stocked in all BFG warehouses, but are available with the appropriate lead time.

# Mulches



## Fafard® Cedar Mulch

Long lasting, decorative Fafard bark products add beauty and value to any landscaped property, prevent weed growth, maintain soil moisture, provide insulation and protection against severe temperature changes, and deter diseases and insect problems. Organic and ready-to-use.

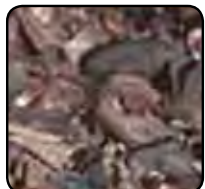
ITEM #	DESCRIPTION	SIZE	QTY/PALLET
12-0796B	Canadian Cedar Mulch	3 cf.	65
12-0796AA	Colorscape	3 cf.	65

## Suncoast Cypress Mulch, Pine Straw Mulch, Eucalyptus Mulch, Mushroom Compost



Reduces soil compaction • Suppresses weed growth • Conserves moisture in the soil • Insulates against extreme temperatures • Eliminates the need to mow and trim around tree trunks • Stops equipment damage to plant bark.

ITEM #	DESCRIPTION	SIZE	QTY/PALLET
12-7395	Cypress Mulch	2 cf.	80



## Cocoa Bean Shell Mulch

Holds moisture • Retards weed growth • Adds nutrients to soil • Eliminates wood related insects • Resists fading • Insulates roots from extreme temperatures • Deters deer, slugs, and snails.

ITEM #	DESCRIPTION	SIZE	QTY/PALLET
12-7890	Cocoa Bean Shell Mulch	2 cf.	65



## Hardwood Colored Mulches

These colored mulches, made from hardwood chips, are available in red, gold and natural.

DESCRIPTION	SIZE	QTY/PALLET
Hardwood Mulch Red	2 cf.	60
Hardwood Mulch Gold	2 cf.	60
Hardwood Mulch Natural	2 cf.	60



## Bark Products

Natural bark mulches will enhance any landscaping project while benefiting plant growth by maintaining soil moisture. Mulch also insulates plants from drastic temperature changes.

ITEM #	DESCRIPTION	SIZE	QTY/PALLET
12-7848	Shredded Red Cedar	2 cf.	90
12-7836	Small Nuggets Western Bark	2 cf.	75
12-7840	Medium Nuggets Western Bark	2 cf.	75
12-7844	Large Nuggets Western Bark	2 cf.	75
12-7852	Shredded Bark Mulch	2 cf.	75

*Packaging and vendors may vary by region. Some items are not stocked in all BFG warehouses, but are available with the appropriate lead time. Many of the above products can be combined to make half and full truckload shipments (9/18 pallets).*

# Topsoil • Manure • Peat

## Topsoil

Topsoil is specially formulated from a select blend of natural components to give you an all-purpose soil ideal for use in the garden and on lawns.



DESCRIPTION	SIZE	QTY/PALLET
Topsoil	40 lb.	60

## Compost

Compost is produced from select blends of composted organic materials and forest products.



DESCRIPTION	SIZE	QTY/PALLET
Compost	40 lb.	60

## Retail Peat

Harvested from bogs, peat moss is used for overall soil conditioning and to improve water retention.



DESCRIPTION	SIZE
Retail Peat	1 cu. ft., 2.2 cu. ft., 3.8 cu. ft.

# Save the date!



**BFG OPEN HOUSE**  
Lancaster, NY September 24

## BFG HORT EXPOS

Brooklyn Center, MN August 25 & 26  
Hoffman Estates, IL September 1  
Columbus, OH September 29

# 09



**NEW! X3**

X3, one of the most cost-effective and efficient disinfectant/disease control products you can buy, offers triple powered broad spectrum control of bacteria, fungus and algae. X3 is highly concentrated for superior results at higher dilution ratios. Bottom line, X3 boosts your profit margins by reducing plant loss for less. *Hazardous – cannot ship via UPS.*



ITEM #	DESCRIPTION	SIZE	LIST PRICE
19-0563E	X3 Xeroton	96 oz.	\$160.71
19-0563F	X3 Xeroton*	4 gal.	\$637.50
19-0563G	X3 Xeroton*	12 gal.	\$1,760.71

\* Direct ship only.

**NEW! Shuttle O**

Shuttle O is an excellent choice as a rotational tool for control of two-spotted spider mites, spruce spider mites, and other mites. It offers rapid knockdown (2-3 day) and 21+ day residual control along with a reduced risk classification. It's also active on all stages of mites and is easy on beneficials and predacious mites. Shuttle O can be used on ornamentals grown in greenhouses, container and field nurseries, lath and shade houses, arboretums, and interiorscapes. *Not yet registered for use in New York and Kansas.*



ITEM #	DESCRIPTION	SIZE	LIST PRICE
19-0295CC	Shuttle O	1 pt.	\$157.24

**Safari 2G**

Safari 2G insecticide is a new generation, super-systemic insecticide with quick uptake and knockdown for controlling a broad spectrum of troublesome greenhouse and nursery pests. Get quick action on Q- and B-biotype whitefly, mealybug, leafminer, fungus gnat, black vine weevil, glassywinged sharpshooter, armored and soft scale, adelgid and lacebug. Safari 2G's unsurpassed residual control means you apply less of it less often. This granular formulation is ideal for container and field use.



ITEM #	DESCRIPTION	SIZE	LIST PRICE
19-0247B	Safari 2G	20 lb.	\$346.21



**SHIFT INTO OVERDRIVE FOR MAXIMUM SUMMER REWARDS**

**EARN** the latest outdoor gear when you buy select Whitmire Micro-Gen products!

Earn one point for each dollar you spend on qualifying products. You may receive extra points when purchasing from multiple categories.

*This special offer applies to all qualifying purchases made between January 1 and June 30, 2009.*

Summer Fun Rewards include an iPod Shuffle, t-shirts, sports sunglasses, booney hats, and golf balls. Just use Whitmire's online point calculator and redemption form to collect your rewards. You'll find a link on our website at [www.bfgsupply.com](http://www.bfgsupply.com).

Qualify for the SHIFT into Overdrive promotion when you purchase products from the following categories:

**Sanitation**

- Greenshield®
- Ultra-Shield™

**Horticultural Oils**

- Ultra-Pure™ Oil
- PureSpray Green

**Insecticides**

- Duraguard® ME
- Pyreth-It®

**Fungicides**

- Fungaflo TR

**Total Release**

- Attain TR
- Duraplex® TR
- Preclude® TR
- Pyrethrum® TR
- Orthene TR
- Tame/Orthene TR

**HERBICIDE HINTS**  
What to Use Inside the Greenhouse

Weed control in your greenhouse can be difficult, but it is important for many reasons. Weeds harbor disease and pests. Even if you have a solid pest control program in place, weeds around the outside of the greenhouse can provide a breeding ground for insects, disease and weed seeds that can enter the greenhouse through open vents.

When weed seeds get into your crop, you have an even bigger mess! Whether it be annuals, perennials or nursery stock, hand weeding is expensive. Weeds can leave a bad impression with customers who take plants home only to find they contain weeds. Weeds are also unsightly and can be a safety hazard. Luckily, weeds can easily be controlled with a well planned herbicide program.

There are no pre-emergent herbicides labeled for use inside the greenhouse. This is because of potential volatility which causes herbicides to become a gas and move up into the crop on the bench. The damage can be devastating.

**Always read the product label prior to use.**

Herbicides suitable for use inside the greenhouse:

**Reward L&A** – Contact only means it will burn whatever it touches, but does not translocate within the plant (Restricted Use). Typical rate of 1.6 oz. per 5 gallons.

ITEM #	SIZE	LIST PRICE
19-1053	1 Gal.	\$181.03

**Scythe** – Control of a broad spectrum of weeds through burndown activity. Typical rate of 32 oz. per 5 gallons.

19-1072	2.5 Gal.	\$183.87
---------	----------	----------

**RoundUp Pro** – Only for empty greenhouses. Systemic control of virtually all weeds with contact. Superior formulation means excellent results. Typical rate of 10 oz. per 5 gallons.

19-1058	2.5 Gal.	\$188.59
---------	----------	----------

**Glyphosate Pro 4** – Only for empty greenhouses. Value formulation of glyphosate.

19-1064A	2.5 Gal.	\$134.09
----------	----------	----------





# Right Size at the Right Price

Just my size! These chemical products are packaged and priced to suit the needs of smaller growers.



Always read the product label prior to use.

INSECTICIDES				LIST PRICE
19-0368A	<b>Attain</b>	2 oz.	Total release aerosol for a wide range of pests.	\$17.24
19-0004D	<b>Avid</b>	8 oz.	Great for mites & leafminers. Also aphids, thrips & whiteflies.	<del>\$122.57</del> <b>\$99.00*</b>
19-0007H	<b>Botanigard</b>	1 qt.	Natural product controls most common greenhouse pests.	\$75.86
19-0028	<b>Decathlon</b>	½ lb.	This popular product controls a wide range of common insects.	\$80.69
19-0086GB	<b>Enstar II</b>	5 oz.	Insect Growth Regulators are great for rotations.	\$97.97
19-0637A	<b>PureSpray Green</b>	1 gal.	OMRI certified horticultural oil for broad spectrum control.	\$43.10
19-0637B	<b>Pyreth-It</b>	1 pt.	Pyrethroid chemistry offers a wide range of insect control.	\$52.59
FUNGICIDES				
19-0450	<b>Banrot</b>	2 lb.	Effective for root and stem diseases.	\$89.36
19-0571J	<b>Cease</b>	2.5 gal	New biological product for foliar and root diseases.	\$69.83
19-0478A	<b>Cleary 3336</b>	1 qt.	Controls a wide range of diseases from root to shoot.	\$60.34
19-1064D	<b>Clevis</b>	2 lb.	Combination of 2 chemicals offers contact & systemic control.	\$22.17
19-0547B	<b>Heritage</b>	4 oz.	Powerful strobilurin chemistry provides long lasting control.	<del>\$202.50</del> <b>\$169.00*</b>
19-0551B	<b>Milstop</b>	5 lb.	Great for Powdery Mildew and other diseases.	\$51.72
19-0554D	<b>Pageant</b>	1 lb.	New combination chemistry controls almost all foliar pathogens.	\$70.00
19-0573T	<b>Strike 50W</b>	½ lb.	Long lasting systemic control of many diseases.	\$95.17
PLANT GROWTH REGULATORS				
19-0719	<b>B-Nine</b>	1 lb.	Short term height control on many popular crops.	\$120.00
19-0630	<b>Bonzi</b>	1 qt.	The most popular PGR on the market.	\$168.10

\*Special prices are valid through April 30, 2009.

## SPRAYER SOLUTIONS

### DRAMM MSO Heavy Duty Sprayer

SAVE 5%

ITEM #	DESCRIPTION	PRICE
20-0918C	Electric Package	\$878.75
-	Gas Package	\$1,053.55
20-0917	Electric Sprayer Only	\$593.75
20-0927	Gas Sprayer Only	\$755.25

- Package includes 20 gallon tank and cart.
- Electric sprayers have a 33 ft. hose.
- Gas sprayers have a 66 ft. hose.



MSO Electric Sprayer Package

### DRAMM Hydra Sprayer

SALE PRICE \$2560.25

20-0929F

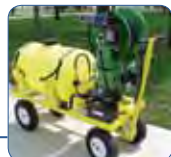
Dramm Hydra Sprayer w/ 150' hose, cart and tank, perfect for the application of insecticides, fungicides, growth regulators, fertilizers, disinfectants and other chemicals.

SAVE 5%



### Siebring Kruser

ITEM #	DESCRIPTION	PRICE
18-0449C	Siebring Kruser Sprayer Electric with 100' hose	\$1,980.00
18-0449G	Siebring Kruser Sprayer Gas with 100' hose	\$2,290.00
20-0849	Mist 'R Drench MD83 Electric	\$3,515.00
-	Mist 'R Drench MD83G Gas	\$3,705.00



### Solo 425 and Solo 475

SALE PRICE \$117.31

20-0450

Solo 425 Backpack Sprayer 4 gallon, produces a wide pressure range of up to 90 psi and easily and effectively handles disinfectants, fertilizers, herbicides, pesticides, and formulations for tree, shrub and plant protection.

SAVE 20%

SALE PRICE \$117.31

20-0451

Solo 475 Backpack Sprayer 4 gallon, produces up to 60 psi and is ideal for handling chemicals in wettable powder form, as well as liquid formulations.



All sprayer offers end April 30, 2009.

### A Cart Full of Savings

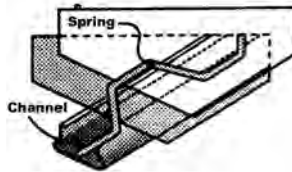
BFG Grower Select Retail Carts are ideally suited for garden centers to handle a wide variety of products, including bedding plants, perennials, hanging baskets, pots, and other material. The top shelf even folds up to make room for nursery stock.



ITEM #	DESCRIPTION	1-10 ea.	11-24 ea.	25+ ea.
48-6501	22"x32" Nesting Shopping Cart	\$279.00	\$259.00	\$249.00

### Spring Lock Polylock

Hold your poly in place with Spring Lock from BFG's Grower Select line. Spring Lock doesn't pinch, bind, or weaken the material it secures. The aluminum channel holds two springs for a stronger grip. Talk to your BFG sales rep about Spring Lock and our entire assortment of poly accessories.



ITEM #	DESCRIPTION	1-19	20-59	60-99	100+
E09550	Spring Lock Base 12'	\$14.70	\$13.23	\$11.76	\$10.29

ITEM #	DESCRIPTION	1-4	5-9	10+ boxes
E09560	Spring Lock Spring 6'6" 20/bd	\$37.10	\$33.39	\$29.68

### 14' Cold Frames

Need a little extra growing space? It doesn't take much to put up 14' Cold Frames from BFG's Grower Select line. The simple design is economical and easy to install. Optional stake packages are available to raise center height from 6'5" to 8'5" and purlins are sold separately.



ITEM #	DESCRIPTION	1-9	10+
A01540	14' Cold Frame Bow	\$39.95 ea.	\$35.96 ea.

### 30' Gothic Style House

Our BFG Grower Select 30' Gothic Style house is the workhorse of our product line. It's an ideal year-round structure whose bow spacing, overall length, and other features can be customized to suit your operation. Your BFG sales rep can work up a complete package price that fits your growing needs and budget.



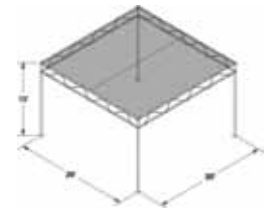
## Poly-Tex Shade Houses

**SAVE 5%**  
WHEN YOU ORDER BY APRIL 30, 2009!  
CALL FOR CUSTOM QUOTES.



#### W Truss

The W-Truss shade structure from Poly-Tex offers form and function with style. Now available with a peaked roof option, the W-Truss mirrors the look and feel of a greenhouse while maximizing your outdoor retail space. Twenty-foot lengths are standard, but custom sizes are also available.



**NEW!**



#### Sun Shadow

The new Sun Shadow was designed to be the simple, low-cost shade solution for your seasonal garden center. Protect your plants from the blazing sun while providing a cool, comfortable shopping environment for your customers. Reduce your watering requirements and keep your product in top-selling shape. The easy-to-assemble, modular design features galvanized steel construction and an extended base plate that allows you to use your palletized product for hold-down. No more holes in your parking lot!



#### Sunstopper

Protect your plants with the Sunstopper shade structure from Poly-Tex. Available in 10'x20' and 20'x20' standard blocks, the Sunstopper is also offered in custom configurations to match your existing layout.